

Science Knowledge Organiser - Year 4

Unit: What happens to food in humans and animals?

Key Vocabulary:

carnivore	Carnivores are animals that feed on other animals.
digest	To digest is to break down food so it can be used by the body.
herbivore	Herbivores are animals that eat plants.
large intestine	The large intestine is part of the intestine where water is absorbed.
oesophagus	The oesophagus is a muscular tube which transports food from the mouth.
omnivore	Omnivores are animals that feed on plants and other animals.
predator	Predators hunt and eat other animals.
prey	Prey is an animal that gets hunted and eaten by another animal.
producer	Producers are plants that produce their own food, using sunlight.
rectum	Stools are stored in the rectum , before they leave the body.
small intestine	The small intestine is part of the intestine where nutrients are absorbed into the body.
stomach	The stomach is where food is broken down.

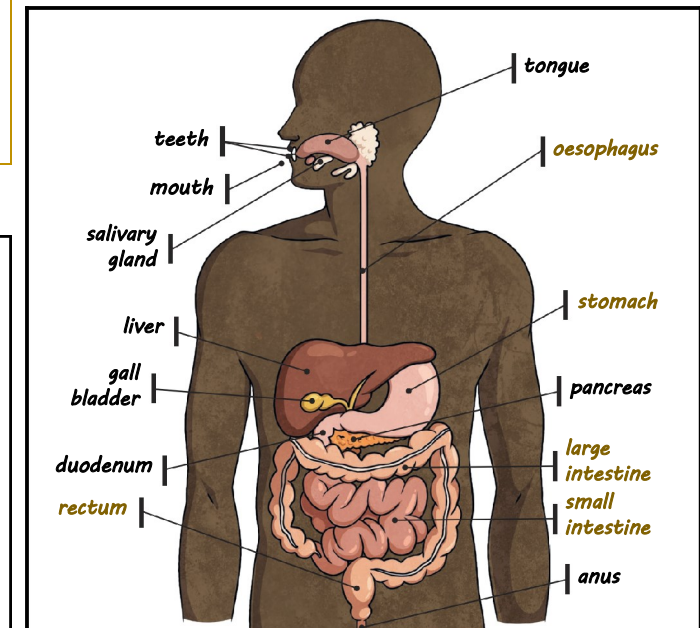
Science Skills:

- Describe the simple functions of the basic parts of the digestive system in humans.
- Identify the different types of teeth in humans and their simple functions.
- Construct and interpret a variety of food chains, identifying producers, predators and prey.
- Use straightforward scientific evidence to answer questions or to support my findings.
- Identify differences, similarities or changes related to simple scientific ideas and processes.
- Ask relevant questions and use different types of scientific enquiries to answer them.
- Set up simple practical enquiries, comparative and fair tests.
- Make systematic and careful observations.
- Report on findings from enquiries.
- Use results to draw simple conclusions, make predictions for new values, suggest improvements and raise further questions.

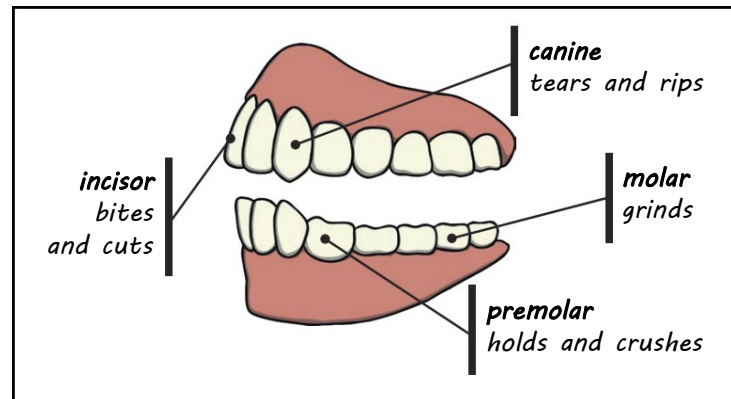
Key Facts:

- Food is churned around in the **stomach** and broken down by **stomach acid**.
- Although the **small intestine** is narrower than the **large intestine**, it is longer, measuring around 7 metres.
- Stools are formed in the **large intestine**.
- The teeth of an animal are designed to eat different foods, depending on the diet of the animal.
- Some people have wisdom teeth but they serve no purpose now.

The Human Digestive System



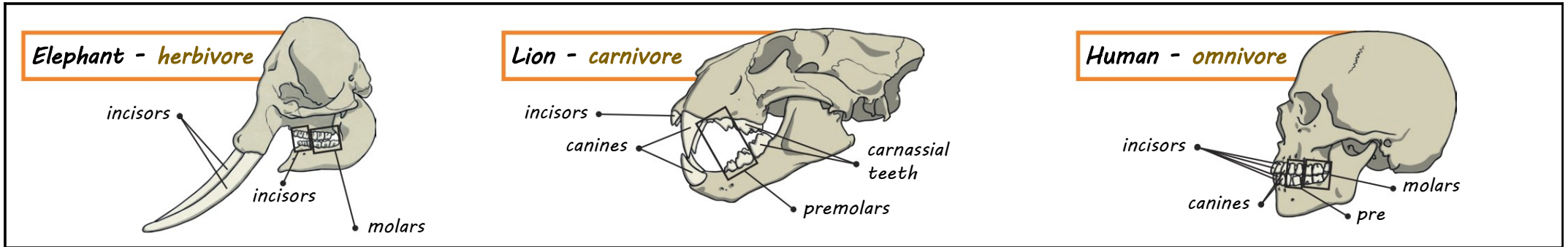
Human Teeth Functions



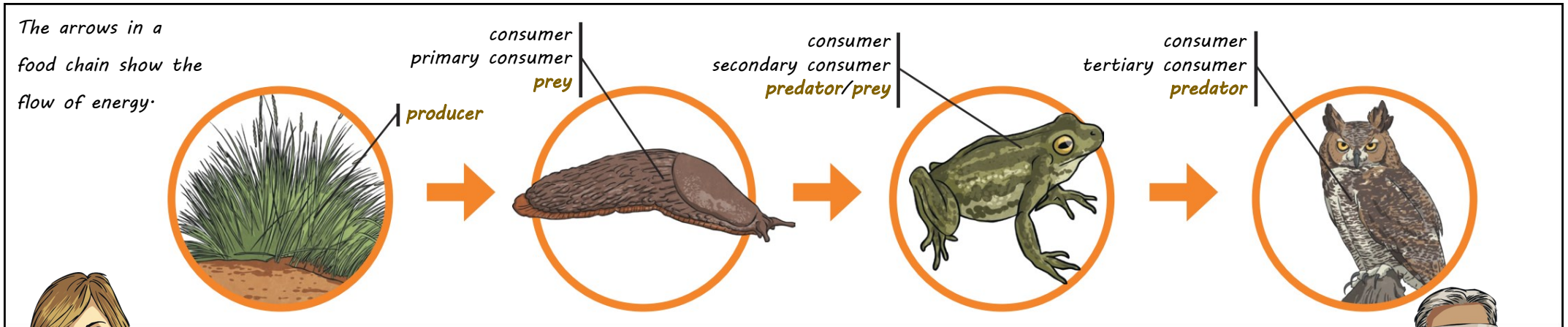
Science Knowledge Organiser - Year 4

Unit: What happens to food in humans and animals?

Examples of a herbivore, carnivore and omnivore skull:



Example of a food chain:



To help prevent tooth decay:

- limit your consumption of sugary food and drink;
- brush your teeth twice daily using a fluoride toothpaste;
- visit your dentist every six months for a check-up.

